

Music Theory Placement Test Sample

Name _____

I. Pitch Identification. Name the notes on the staff below.



1. E

2. A

3. G

4. C

5. A Sharp (A#)

6. D Double-Flat (D $\flat\flat$)

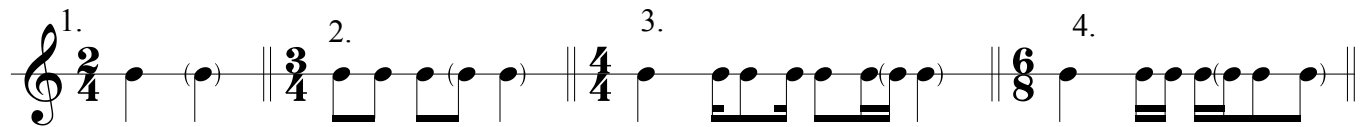
7. C Sharp (C#)

8. G Double-Sharp (G $\sharp\sharp$)

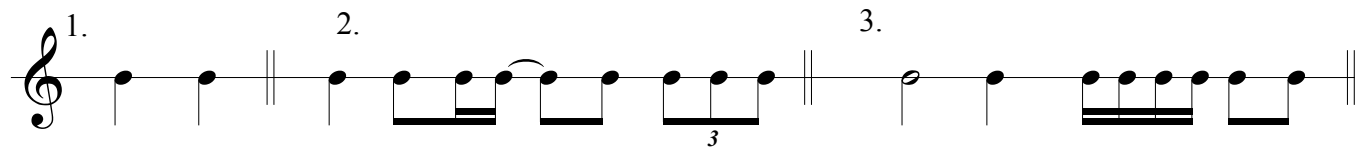
9. E Double-Flat (E $\flat\flat$)

II. Rhythm and Time Signatures

A. Rhythm. Fill in the missing rhythms.



B. Time Signatures. Write in the correct time signature.



1. 2/4

2. 4/4

3. 5/4

III. Intervals. Give the number of the interval. Optional: Give the quality of the interval (P [perfect], M [major], m [minor], + [augmented] or ° [diminished]).

1. 2. 3. 4. 5.

1. m2 2. P5 3. m6 4. +4 5. m7

IV. Key Signature. Name the major keys.

 G
Major

 B \flat
Major

 A \flat
Major

 F \sharp
Major

Opt.: f
Relative Minor

 d \sharp
Relative Minor

V. Scales. Add accidentals to complete each scale below.

Major

Natural Minor

Harmonic Minor

Melodic Minor

